

YMC EcoPrime Twin LPLC



EcoPrime Twin Systems

Model

Base unit	EP Twin 100	EP Twin 300	EP Twin 500	EP Twin 1000	EP Twin 2000
System flow rate (L/min)*	0.004 to 0.8	0.02 to 3.3	0.06 to 10.0	0.12 to 20.0	0.22 to 40.0

*System flow rate is the pump flow rate. Recommended flow for specific chromatographic operations may be different.

EcoPrime Twin Standard Functions

Pump A inlets	4
Pump B inlets	4
System outlets	2 for product fractions, 1 for waste
Pre-pump air sensors	2
Flow meters	2
Pressure transmitter	6
Pre-column air sensor	2
Post-column UV sensor (dual wavelength)	2
Post-column pH sensor	1
Post-column conductivity sensor	2
Drainability	Low point drain
Blowdown	Includes regulator, filter
Primary material of construction	Stainless steel (316L)

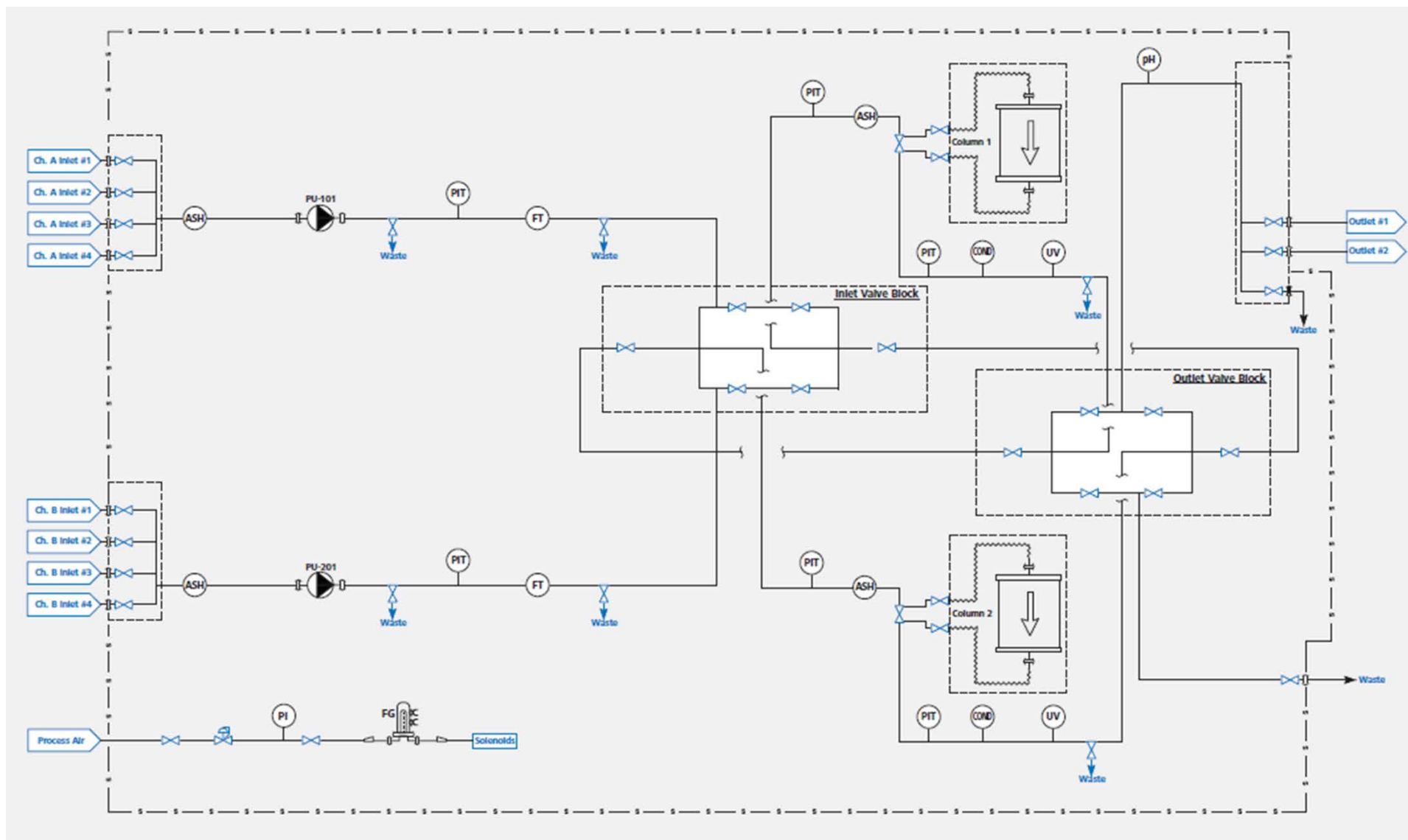
EcoPrime Twin Options

Buffer in-line dilution – Pump C	Pump C with 4 inlets
Pre-column analytics (pH and conductivity sensors)	2
Inlet valves for Pump C	2 additional valves
Inlet valves for Pump A	2 additional valves
Static mixer	1
CIP manifolds	1 inlet, 1 outlet
Outlet valves	3 additional fraction valves
Pre-column filter (includes valves, PIT, drain and vent)	2 or 4

Subject to change without notice. All goods and services are sold subject to terms and conditions of sale of the company within YMC which supplies them. A copy of these terms and conditions is available upon request. Contact you local YMC representative for the most current information.

YMC EcoPrime Twin LPLC

Flow schematic for standard, multi-column platform for production-scale chromatography



Shown: Base system; available options are listed in the table on the reverse side.

© 2019 YMC Process Technologies. – All rights reserved. The EcoPrime Twin is an exclusive technology licensed from ChromaCon, AG and protected by multiple international patents.

YMCpt_EPTWIN_options and flow schematic_Feb2019